

Flambe

"Eating something fresh out of the oven is like a hug you can taste"
- Regina Brett



EXPLORA COLOMBO



THE FUTURE NOW

We have explored the latest technologies to give you something you have never seen.

Forget the simple professional oven: every Explora oven is a smart and interconnected appliance, that can be controlled and programmed through a Smartphone, tablet or PC and allows handling all your daily and special activities.

FEATURES

- 7inch Touch Display
- Wi-Fi Connectivity
- Explora Smart App
- Usb Access
- Offsite Monitoring
- Integrated Probe
- Ultra- Resistant Chamber
- Double - Chimney System
- Moisture Control
- Multi-Control
- Pause Function
- Multi Level Cooking
- Pre-Set Or Customized Phases

PIRON[®]
Professional Ovens

EXPLORA
colombo

2 YEAR
WARRANTY



EXPLORA SMART APP

PROGRAM COOKING

ECO CLEANING SYSTEM

SKU CODE

PRODUCT DESCRIPTION

COP7920
COP7910
COP7906
COP7904

COMBI STEAM OVEN 20 PAN
COMBI STEAM OVEN 10 PAN
COMBI STEAM OVEN 6 PAN
COMBI STEAM OVEN 4 PAN

Flambe

"Since I was a kid, baking has been part of my life"
- Paul Hollywood



CONTROL INTERFACE FEATURES

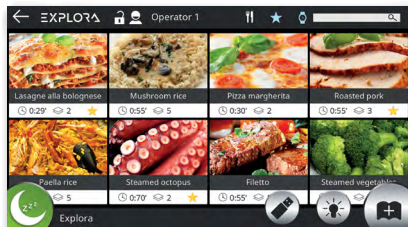
A modern & high-tech control interface that through the intelligent use of colours and icons allows the operator to automatically create and manage cooking processes with ease and simplicity, whilst retaining the ability to also manually control all cooking functions.

Combi steam ovens for gastronomy and pastry.



MANUAL COOKING

- Convection cooking with temperatures from 30 °C to 260 °C.
- **(Humidity Injection)**
Convection cooking + humidity inserted manually.
- **(Humidity Regulation)**
Mixed cooking Convezione + humidity possible to regulate (from 10% to 70%).
- **(Sator Steam)**
Steam cooking (from 80% to 100%).
- Cooking with core probe.
- Delta T cooking.
- Reverse direction.
- 8 speed fan motor.



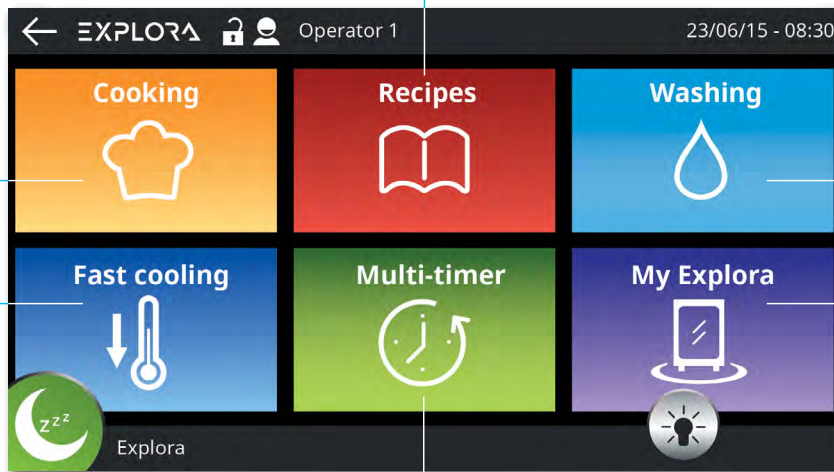
PROGRAM COOKING

- 1000 storable programs.
- 6 product categories.
- Memorizes cooking programs used
- USB interface



ECO CLEANING SYSTEM

- 3 wash cycles
- 1 rinse cycle.
- Automatic detergent management.

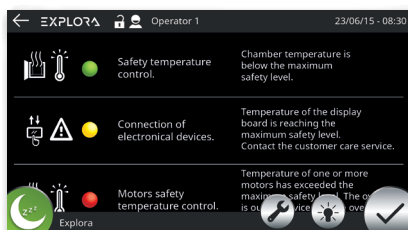


Display TFT 7"



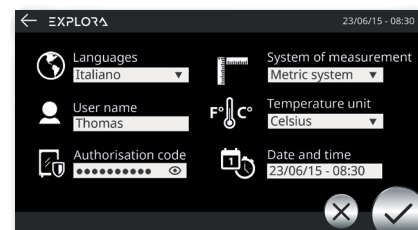
FAST COOLING

- Two fast cooling programs



DIAGNOSTIC

- Pragmatic icons that indicate the error.
- Service control panel.



ADVANCED SETTINGS

- Multilingual with a keyboard that adapts to the language.
- Choose between metric and standard measurements.